

BEARDED DRAGONS

Lifespan Approx: 10 years

Sex: Mature males tend to have 2 large glands at the base of the tail, females 1. A probe may need to be used to determine sex, particularly in juveniles

Sexual Maturity: 18 months (can depend on growth rates)

Origin: Australia

Pet Suitability: Excellent

Sociability: Easily handled and even seem to enjoy human interaction. May be paired or grouped in enclosures as long as space is adequate. Male Beardies may fight.

Preferred Temp: Hot and cold gradients: Hot Spot 40 degrees, cool around 25 degrees

Natural Diet: Omnivorous, varieties of vegetation and insects

Vetafarm preferred captive diet: **Herpavet Dragon Complete Diet.**

Vetafarm Suitable Diets: Fresh Vegetable and insects with supplemented **Multical Dust**

Dr Tony's Bit: Central and Pygmy bearded dragons make excellent pets, particularly for children due to their relatively hardy design and ability to accept and even enjoy human interaction. Eastern Bearded Dragons are slightly less desirable, harder to find and a little harder to tame.

Bearded Dragons do require quite spacious enclosures with hot and cool gradients available to the animal. Try not to house multiple male dragons in an enclosure or to overcrowd. These reptiles are territorial and if they lack space you may find the more submissive dragons in the enclosure start to miraculously loose limbs or parts of their tail! Seek veterinary advice or contact **Vetafarm** if legs or spine seems bent, dragon ceases to eat or loses weight.



BLUE TONGUE LIZARD

Lifespan Approx: 18-20 years

Sex: Probe needed to determine sex accurately

Sexual Maturity: 2 Years (can depend on growth rates)

Origin: Australia

Pet Suitability: Very Good

Sociability: Tolerate handling well. Blue Tongues like most lizards should not be housed with other reptiles smaller than them. Blue Tongues do have a tendency to become territorial and may attack other Blue Tongues if adequate space is not provided.

Preferred Temp: Hot and cold gradients: Hot 38 degrees, cool around 22 degrees

Natural Diet: Omnivorous, varieties of vegetation, insects. Particularly enjoy garden snails (ensure these snails are free from poison and baits).

Vetafarm preferred diet: **Herpavet Skink and Monitor Diet**

Vetafarm Suitable Diets: Fresh Vegetable and insect blend with supplemented **Multical Dust.**

Dr Tony's Bit: Blue Tongue Lizards make great pets if handled correctly and frequently. Blue Tongue like any skink do not like being picked up without support under their legs and body, particular care must be taken not to pick them up by the tail as they do have the ability to drop them. Be prepared to set aside a reasonable area for them to grow into, as they do get quite big and require adequate space. Blue Tongues love to eat, so a close eye must be kept on their diet to ensure they do not put on excess weight. Attention must also be given to shedding. Contact a vet or **Vetafarm** if bends are seen in legs or spine, Bluey loses weight, ceases feeding has shedding issues or toe/limb constrictions.





WATER DRAGONS

Lifespan Approx: 15 years

Sex: Probe needed to determine sex, particularly in juveniles

Sexual Maturity: 2-3 Years

Origin: Australia/Asia

Pet Suitability: Moderate

Sociability: Skittish nature, commonly will lie still when picked up, then explode out of the handlers arms.

Preferred Temp: Hot and cool gradients: Hot 36 degrees, cool around 25 degrees

Natural Diet: Omnivorous, varieties of vegetation, insects, small vertebrates

Vetafarm Preferred Diet: **Herpavet Dragon Complete Diet**

Vetafarm Suitable Diets: Fresh vegetables, insects and pinkie mice with supplemented **Herpavet Multical Dust** (vitamins, minerals, calcium)

Dr Tony's Bit: Water Dragons are interesting reptiles that demand a versatile enclosure with both hot and cold gradients and dry and wet areas also. Combine this with their flighty nature and the Water Dragon becomes less suitable for children or people who like to physically interact with their animal and more for the devoted observer. Water Dragons require access to adequate water in their enclosure to submerge themselves in, they also love to climb and require a basking area. Be sure to seek vet advice or contact Vetafarm if limbs or spine seems bent or out of shape, dragon stops eating or begins losing weight.



SHINGLEBACK LIZARD

Lifespan Approx: 20 years

Sex: Probe needed to determine sex accurately

Sexual Maturity: 2 Years

Origin: Australia

Pet Suitability: Very Good

Sociability: Very similar to Blue Tongue, slightly more docile, very easy to handle.

Preferred Temp: Hot and cold gradients: Hot 38 degrees, cool around 22 degrees

Natural Diet: Omnivorous, varieties of vegetation, insects.

Vetafarm preferred diet: **Herpavet Skink and Monitor Diet**

Vetafarm Suitable Diets:

Fresh vegetable and insect blend with supplemented **Multical Dust**, feeder fish.

Dr Tony's Bit: Shingle Backs are again fairly hardy and easily tamed pets with good appetites. Spacious enclosures are a must, with the correct cool and warm gradients. Shingle Backs do not tolerate high humidity, this must be taken into account when choosing a water bowl as the relatively high temperature coupled with a large open water source will increase humidity significantly. Water bowls should either be kept small (around the size of a Shingle Backs head) or only put into the enclosure twice a week for 24 hour periods at a time. A vet or **Vetafarm** should be contacted if your lizard - legs, or back are twisted or bent, ceases eating, has respiratory stress, trouble shedding or have toe or limb constrictions.



MONITORS/GOANNAS

Lifespan Approx: depends on species

Sex: Probe needed to determine sex accurately

Sexual Maturity: depends on species

Origin: Australia – Asia Pacific

Pet Suitability: Moderate

Sociability: Monitors in general are not suitable pets for small children or novice keepers. Primarily solitary reptiles, they are best kept single or paired reptiles to an enclosure.

Preferred Temp: Hot and cold gradients: Hot 38 degrees, cool around 22 degrees

Natural Diet: Carnivorous scavenger, varieties of carrion, vertebrates, insects and eggs.

Vetafarm Preferred Diet: **Herpavet Skink and Monitor Diet**

Vetafarm Suitable Diets: Live/Dead vertebrates, Insects supplemented with **Multical Dust and/or Herpaboost.**

Dr Tony's Bit: Monitors are difficult to tame and coupled with their long sharp claws and razor like teeth are almost always a no no for children. Monitors require very spacious enclosures with cool and warm gradients and a hot spot for basking after feeding. Most Monitors prefer a hot, dry environment but this depends on the species and research into each particular type is necessary before making a decision on which Monitor to buy and the type of conditions they require. Do not feed your monitor from your hand! Especially if you are looking for a career that requires the use of your fingers! Contact a vet or **Vetafarm** if your monitor ceases feeding, has bent limbs or back.



CARPET/DIAMOND PYTHON

Lifespan Approx: up to 20-30 years depending on species

Sex: Probe needed to determine sex accurately

Origin: Australia

Sexual Maturity: 2-3 Years

Pet Suitability: Good pet for first time python keepers and the enthusiast

Sociability: Readily accept handling from a young age. Single or paired pythons of the same size and species to an enclosure.

Preferred Temp: Warm and cool gradients: Warm 32 degrees, cool around 28 degrees (temp drop to 22-28 degrees during hibernation)

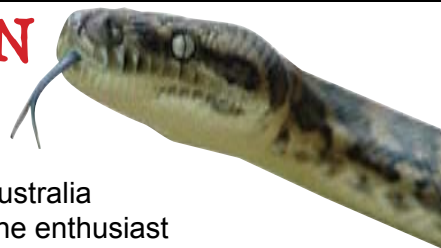
Natural Diet: Carnivorous, small to medium size vertebrates.

Vetafarm preferred Diet: Rat or mice pinkies, weaners or fuzzies depending on size of python.

Herpaboost can be injected into food to stimulate feeding/supplement vitamins, protein and amino acids.

Vetafarm Suitable Diets: addition of **Herpaboost. Herpavite** may be administered for vitamins.

Dr Tony's Bit: Diamond/Carpet Pythons are a great pet for the first time python enthusiast. These pythons require weekly feeding during the first year of their life and feeding every 2-3 weeks as adults. Carpet/Diamond Pythons are arboreal, therefore need heat/light from above and a branch/branches to climb. When handling pythons it is also advisable to keep jerky or sudden movements to a minimum, as this may stress the python and give cause to strike. A shallow and wide water bowl is best for these pythons with enough room for the animal to lie in it. Contact a vet or Vetafarm if experiencing trouble shedding, birthing difficulties, skin blisters or if your python ceases to eat.



CHILDRENS PYTHON

Lifespan Approx: up to 20 years accurately

Sex: Probe needed to determine sex

Sexual Maturity: 12-18 months

Origin: Australia

Pet Suitability: Very Good

Intelligence: Moderate

Preferred Temp: Hot and cold gradients: Hot 38 degrees, cool around 22 degrees

Natural Diet: Carnivorous

Vetafarm preferred diet: Live/dead vertebrates with vitamin supplements

Vetafarm Suitable Diets: addition of **Herpaboost** and/or **Herpavite**

Dr Tony's Bit: Childrens pythons, as the name predicts, are a perfect pet for children with a passion for a pet with scales and a long tail instead of fur or feathers. They take well to handling and are small enough as adults to not become a handful with age. Childrens Pythons are fossorial (like to stay on the ground rather than climb) Heating can be provided from above or below by heat mats. Be sure to contact a vet or Vetafarm if your python has shedding problems, stops eating, gets skin blisters or 'brain' signs – twisting, stargazing.



GREEN TREE FROG

Lifespan Approx: up to 30 years

Sex: Sexing in juveniles difficult – as adults male have yellow throat sacks, female's stay more pure white colour. Males make distinct croaking noise as adults.

Sexual Maturity: 2 years approx

Origin: Australia

Pet Suitability: Good

Sociability: Handle well especially as adults, which are particularly docile. Can be housed with multiple other Green Tree Frogs as long as space is adequate and animals are of the same relative size.

Preferred Temp: Warm and cool gradients, average temp around 28 degrees up top, 24 – 25 degrees at ground level, relative humidity is best at around 50-60%.

Natural Diet: Carnivorous/Insectivorous

Vetafarm preferred diet: Insects – crickets, woodies, some moths. Adult Green Tree Frogs can be fed the occasional pinkie mouse. Dust insects with **Multical dust**.

Dr Tony's Bit: Green Tree Frogs require similar water conditions to tropical fish, with water temperature at around 26 degrees. When handling Green Tree Frogs, wearing latex gloves can often be the safest for the animal, if you are to handle with bare hands be sure to wash hands, rinse, dry, wash again with plain water. Worms can be a serious issue for Green Tree Frogs and a regular worming schedule is a must. Green Trees are best fed daily as juveniles and once every two days as adults. See Vetafarm or your vet if you notice lumps on the body, red legs, abnormal posture of legs or spine or if your frog ceases to feed.

